



MEN / T-SHIRTS
STANLEY HIPS



STTM618

Heavy round neck tee-shirt

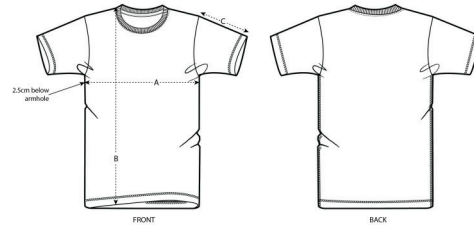
Single Jersey
100% Organic ring-spun Combed Cotton
200 GSM

- Set-in sleeve
- 1x1 rib at neck collar with twin needle topstitch
- Inside herringbone back neck tape
- Sleeve hem and bottom hem with flatlock topstitch
- Side seams with flatlock topstitch

MEDIUM FIT

S M L XL XXL XXXL XXXXL*

Size guide



SIZES	S	M	L	XL	XXL	XXXL	XXXXL
A Half Chest	49	51	54	57	60	63	66
B Body Length	69.5	71.5	73.5	75.5	77.5	79.5	80.5
C Sleeve Length	20.5	20.5	21.5	21.5	22.5	22.5	23.5

Printing Specifications

Fits all kind of printing techniques. For more information, please visit our website.

WHITES



WHITE

COLORS



BLACK

LIGHT OPALINE

CAMEL

NAVY

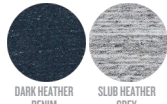
BRITISH KHAKI

ESSENTIAL HEATHERS



HEATHER GREY

SPECIAL HEATHERS



DARK HEATHER DENIM

SLUB HEATHER GREY

*Size available on limited number of colours
Please check our webshop for latest information

STANLEY/STELLA

Wash similar colours together, do not iron on print, wash and iron inside out.

