



WOMEN / CREW NECK SWEATSHIRTS  
**STELLA TRIPSTER**

 20 per box

STSW146

**The iconic women's crew neck sweatshirt**

Terry Sweatshirt  
85% Organic ring-spun Combed Cotton, 15% Recycled Polyester  
350 GSM

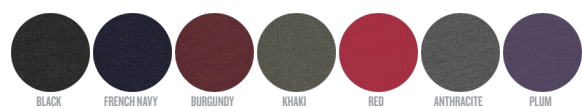
- Raglan sleeve
- 1x1 rib at neck collar, sleeve hem and bottom hem
- Inside herringbone back neck tape
- Self fabric half moon at back neck
- Single needle topstitch at neck collar
- Sleeve hem and bottom hem with twin needle topstitch

MEDIUM FIT

XS S M L XL XXL\*

Size guide

COLORS



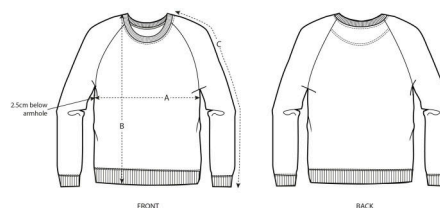
ESSENTIAL HEATHERS



SPECIAL HEATHERS



\*Size available on limited number of colours  
Please check our webshop for latest information



SIZES		XS	S	M	L	XL	XXL
A	Half Chest	47.5	50	53	56	59	62
B	Body Length	61	63	65	67	68	69
C	Sleeve Length	69	71	72.5	73.8	75	76.3

Combo options



Printing Specifications

Fits all kind of printing techniques. For more information, please visit our website.

Wash similar colours together, do not iron on print, wash and iron inside out.

