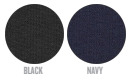




COLORS



WOMEN WINDBREAKERS
STELLA WINDS



STJW080

The women's light hoodie jacket

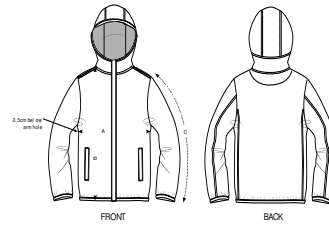
Ripstop
100% Recycled polyester
70 GSM

- Set-in sleeve
- Double layered hood in self fabric
- Hidden front placket with reversed nylon zip
- Side welt pockets with reversed nylon zip
- Elastic tape binding at hood opening, sleeve hem and bottom hem
- Inside hanger loop in self fabric
- Self fabric half moon at back neck
- Single topstitch on all seams

MEDIUM FIT

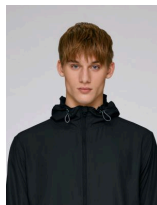
XS	S	M	L	XL
----	---	---	---	----

Size guide



SIZES		XS	S	M	L	XL
A	Half Chest	46	49	52	55	58
B	Body Length	60	62	64	66	68
C	Sleeve Length	62	63	64	65	66

Combo options

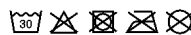


Stanley Breaks

Printing Specifications

For suitable print techniques, please download our printing guide

Wash similar colours together, do not iron on print, wash inside out. Close all zips, buttons and velcros before washing.



STANLEY/STELLA